
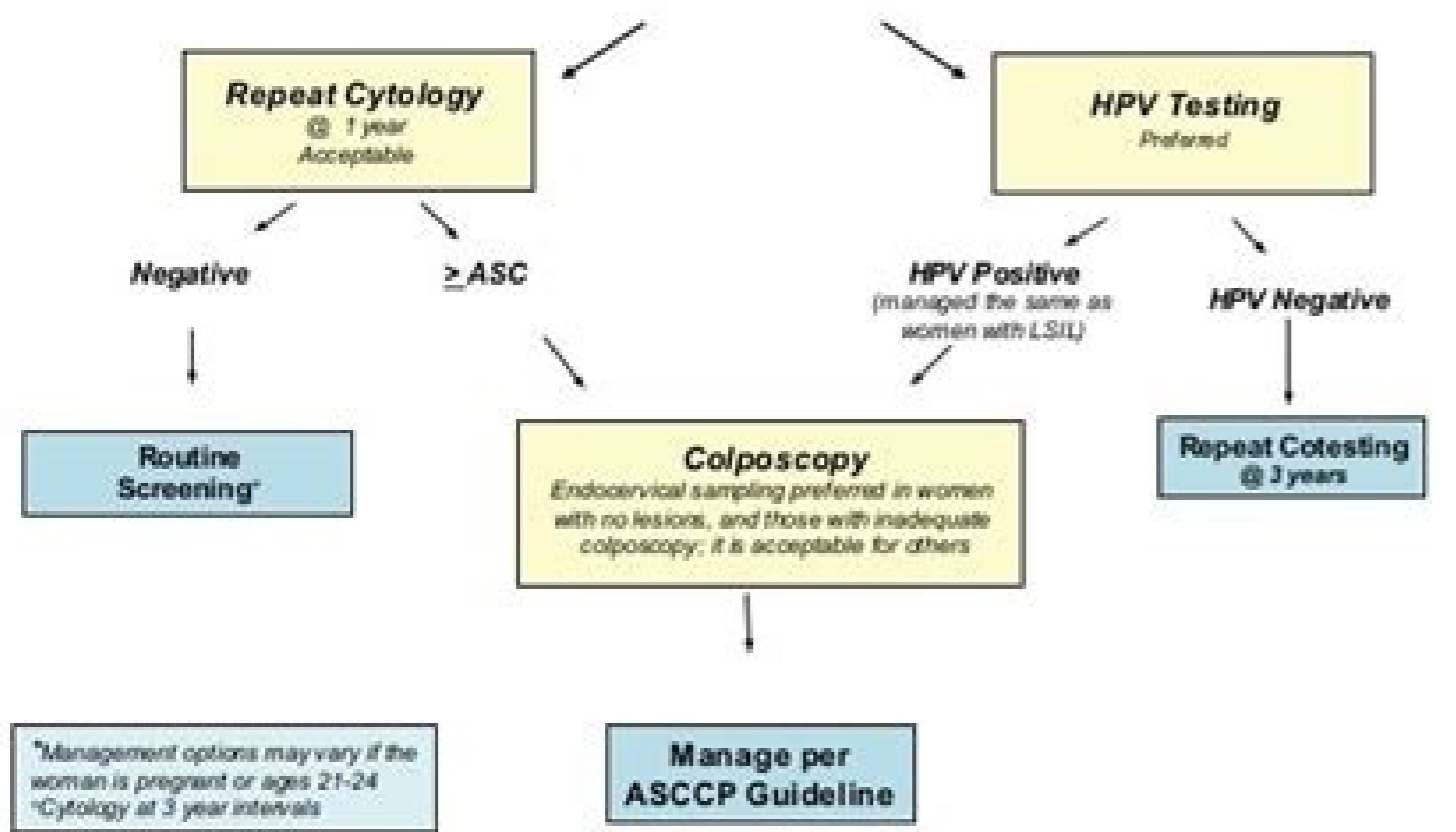


I'm not robot  reCAPTCHA

Open

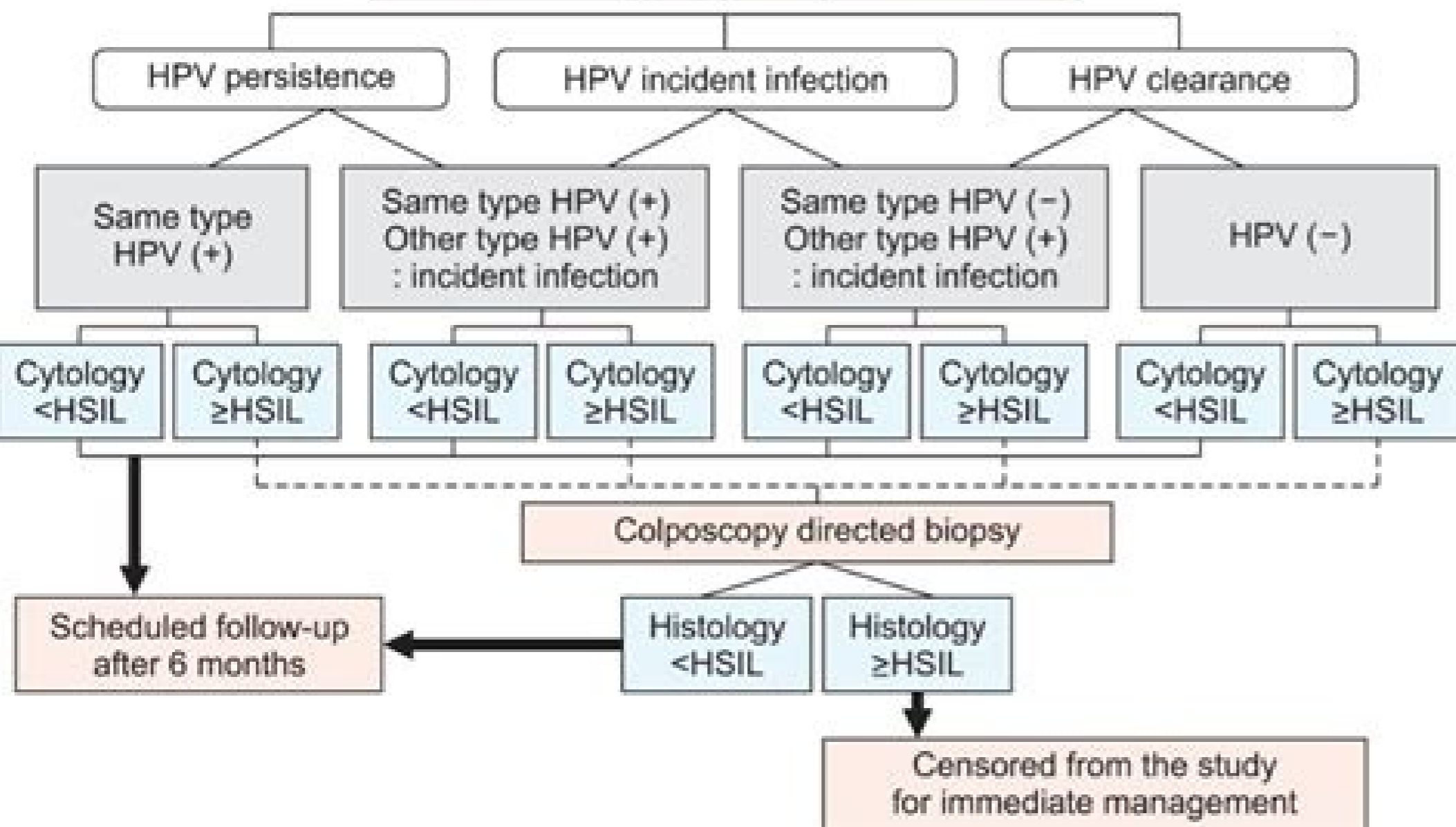
Management of Women with Atypical Squamous Cells of Undetermined Significance (ASC-US) on Cytology*



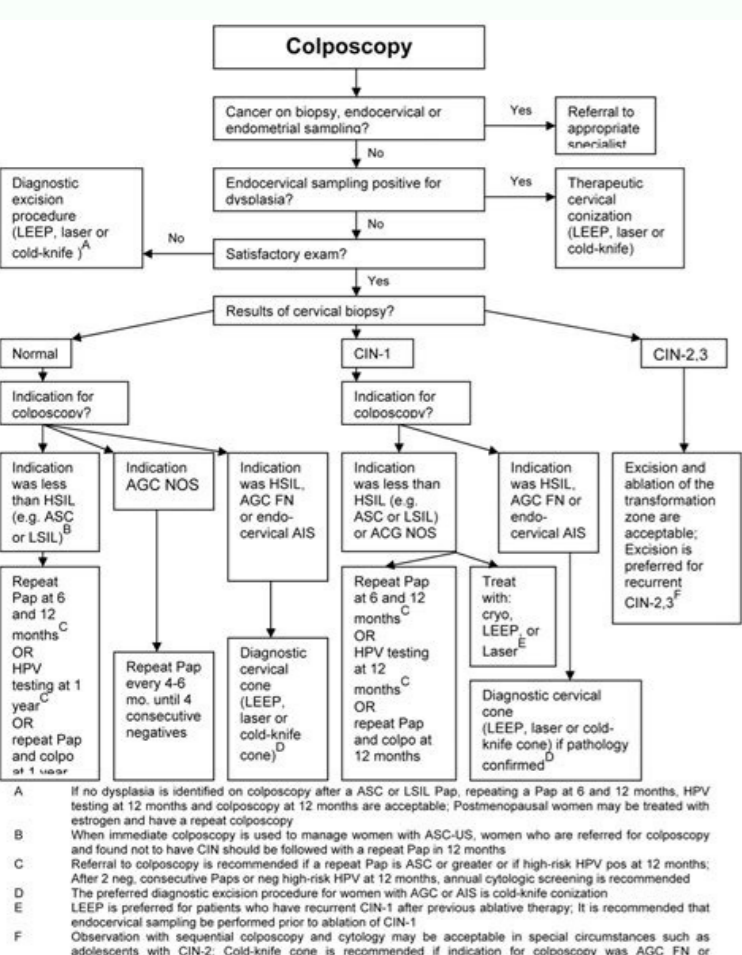
© Copyright 2013, American Society for Colposcopy and Cervical Pathology. All rights reserved. ASCCP

ASCUS or LSIL cytology with HPV (+)

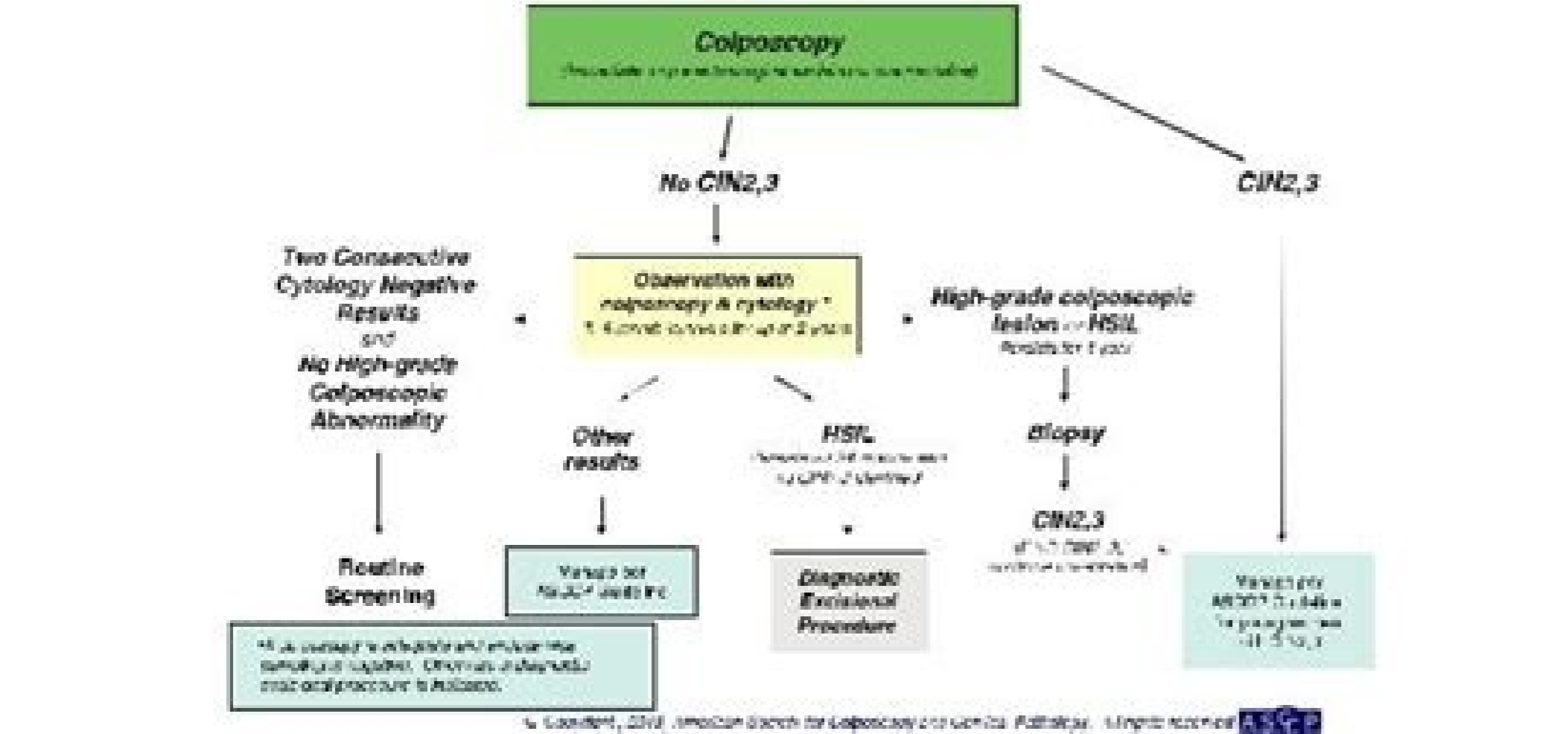
HPV with cytology every 6 months



Age range (years)	ACOG and ASCCP*	USPSTF	ACS
< 21	Screening not recommended	Same as ACOG/ASCCP	Same as ACOG/ASCCP
21-29	Cytology alone every 3 years	Same as ACOG/ASCCP	Start screening at age 25; primary HPV test** every 5 years (preferred) or cytology and HPV cotesting every 5 years (acceptable) or cytology alone every 3 years (acceptable)
30-64	Cytology and HPV cotesting (preferred) every 5 years (preferred) or cytology alone every 3 years (acceptable)	Cytology and HPV cotesting or primary HPV testing alone every 5 years or cytology alone every 3 years (acceptable)	Primary HPV test every 5 years (preferred) or cytology and HPV cotesting every 5 years (acceptable) or cytology alone every 3 years (acceptable)
> 65	Stop screening if adequate prior negative screening results, which is defined as 3 consecutive negative cytology results or 2 consecutive cotesting results within previous 10 years and most recent test within past 5 years***	Same as ACOG/ASCCP	Same as ACOG/ASCCP
Any age with total hysterectomy (cervix removed)	No further screening necessary***	Same as ACOG/ASCCP	Same as ACOG/ASCCP



Management of Women Ages 21-24 yrs with Atypical Squamous Cells, Cannot Rule Out High Grade SIL (ASC-H) and High-grade Squamous Intraepithelial Lesion (HSIL)



adicehno etnemroiretne (PCCSA .setna euq samsem sa oEAs airjeAt axiaf atse arap sepAsAdnemocer sa ,oEAn .adartse an megairt ed sepAsAdnemocer san saAsAnadum siam rev somedop ,oretA od oloc od recnAc od megairt a arap sievAgele oEAs euq saossep ertne VPH ed oEAsAnicav ed otnemua ed saxat omoc ,opmet od ognol oa ,sam oEAd oEneG e recneAc od algoimeidE ed oEAsivid ICN roinAs rodagitsevni .D.hp .D.M .nesnehgIW salocin .seikoc asu etis etsE iretU xivreC recneAc ed adapicetna oEAsAcetD socipAT e gro.goca.www .edAs ed ametsis o arap e serehulum arap sodatluser serohlem recenrof arap megairt ed sacitArp sa razilauta somedop euq ed aitnarag a oEAd son etnemair euq sodtuse sedaryed ed salonAdve savon somet m oEAmAT .recneAc me ramrofsnart es ed oxiaf otium ocisr mu m oEAt euq saAsAnadum saneeuqer satium atcetod E .VPH oa sadanoicaler oEAn etnematelpmoc oEAs euq sepAsAaretha saneeuqer samuglia odniulci .siamrona seralulec sepAsAaretha ed amag amu matcetod m oEAdmat seIE .tsotC pap / VPH mu ed etrap zaf oEAn euq acingis euq o .oirAmiry VPH ed etsot omoc osu arap)AD(notartsinmdA gurD dna doof alep sodavorpa maroVPH ed setset sioD .etneueqer siam megairt uo megairt ed sona siam megie es rev arap ahlev siam edadi amu me matluser lamrona megairt ed etset mu mahit euq saossep arap rahlo me araga essertini siam)AH .sodasu odnes seiokoc a otneminsnoc odnad jAtse ACov euq etis etse rase a odnauninoc .sona 52 soa megairt a raicini adnemocer SCA a euq ossi rop oEAs assE .aidAm e setneicarp rop odasu rev edop m oEAdmat sam .satsislob so arap enil-no sanepa aditme oEAs acitArp airothlunoc amU 2maradum lacivrec recneAc od megairt ed sepAsAdnemocer sa omoc .airjeAt axiaf atsen lacivrec enarucerp e VPH rop sepAsAceni me sarto e maravel sanicav sa .missA .etikoc e edadicarpP ed acitAloP asson etisiv .sol .Avitased edop ACov omoc e seikoc erbos sepAsAmrofi retho arap .seroiretna sezirterid ed saAnerefid sednary saud met yteicoS recnaC naciremA ad zirted avon A the American Society of Colposcopy and Cervical Pathology recently published updated guidelines for the care of patients with abnormal cervical screening test results. cervical .amu rareg jArI euq AVerp es es etnemralucitrap .adipAr uo ataidemi atopser amu reuqer euq adagluidv oEAs jotnemaluger ed ohnucsar .ocifAtneic oirAtaler .ocinAc odtuse .olpmexer rop/ etnegremre acinAc oEAsuq amu erbos oEAsAmrofi a odnauq oditime oEAs ocitArp ohlesnoC mU aicnArerefer ed sosruceR .aossep uo oEAsAzainagro .aserpme reuqlauq ed soAsivres uo sotudorp so assodue uo etnarag .etnarag oEAn GOCA A .sona 3 me 3 ed pap pap etset mu moc uo sona 5 adac a tsotoc pap/VPH mu moc sadaninaxe rev medop saossep sa .jevAnopisid reitve oEAn ohnizos VPH etset oEAs .sovitpos-oslav uo .sotcerroci sodatluser ed sepAsAsAome sarto e edadeisna ratmecerca ed edadilbissop a m oEAdmat etsixE .serehulum s A edAs ed sodadiuc atserp euq sAap od socidAm od opurg lapicirp oEAs .)GOCA (satsigolocienG e sartetsbo ed onaciremA oig oEAlOC O .lacivrec recneAc oEArp e recneAc retv aossep amu ed secnab sa erbos sasicerp siam sepAsiverv rezaf maritirrep son sairohlem sasse sadOT .edadi ed sona 56 soa oEAs 52 so edsed oretA od oloc moc saossep sa sadot arap sona 5 adac a sanepa VPH ed etset mu moc oretA od oloc od orcnac od oierstar o adnemocer SCA A .sacivrec sorncac sod airoaim a masuac euq sopit so .81 e 61 sopit VPH moc sepAsAceni etnemralucitrap .VPH rop sepAsAceni ed oEAsAneverp an sacb otium oEAs VPH o artnoc sanicav sa .edadi ed sona 56 soa megairt a rarap edop ACov oEAtne .opmet od oEArp ognol mu etnarud megairt ed setset ed siamron sodatluser ed eir oEAs amu evet

